



Laminate Floors Installation Instructions



PERPARATION

- **ATTENTION**
- **PRE-LAYING CHECKS**
- **SITE TESTING AND CONDITIONING**
- **SUB FLOOR PREPARATION**
- **PERIMETER/EXPANSION GAPS**
- **TOOLS AND MATERIALS REQUIRED**

INSTALLATION

LAMINATE-WARRANTY GUIDE

- **GENERAL**
- **INSTALLATION**
- **WARRANTY COVERAGE**
- **LIMITATIONS,TERMS AND CONDITIONS**



PERPARATION

● **ATTENTION**

Prior to installation, please ensure that the product received is the correct style and color as well as to the customer's satisfaction. If there are any doubts, do not install the flooring and contact us. Value Tiles & Flooring will not be held responsible for any costs relating to the installation of unsatisfactory or incorrect product.

Important Notice - Laminates, like all wood based products, are hygroscopic (ie react to moisture in the environment). As a result laminate floors will expand and contract accordingly.

All sources of moisture must be rectified prior to the installation of the floor, and moisture levels in rooms fitted with laminate flooring should be maintained at a stable level, in line with normal living conditions. Any construction dampness must be completely dry. This product is not suitable for outdoors or high-moisture or humid areas such as bathrooms, toilets, laundries etc.

● **PRE-LAYING CHECKS**

It is the installer's responsibility to verify that the product and accessories supplied is the correct product, colour, pattern and quantity. Prior to installation, each plank should be carefully checked in good natural light for any obvious visual defects. Never install defective product. If the product is incorrect or has any visual defects or damage, please contact Value Tiles & Flooring. Generally, Value Tiles & Flooring will not be responsible for any visible defects after the flooring has been cut and/or installed.

● **SITE TESTING AND CONDITIONING**

Acclimation is a required procedure prior to the installation of laminate flooring. Store the UNOPENED BOXES in the room where the flooring is to be installed for at least 48 hours prior to installation. Always store the boxes on a flat and level surface; never store the boxes on their sides. Heating and air conditioning should be operational and set between 65F-85°F(18.3°C-29.4°C) and relative humidity in the room should be 35%-65% for the acclimation and installation period.

The ambient relative humidity in the installation area should be maintained at 40-60% to prevent condensation forming under the laid flooring. Boxes should be stored no more than 3 high and spaced 200mm apart to allow airflow to avoid damage and maximise acclimatisation if required.

● **SUB FLOOR PREPARATION**

Subfloors must be level, smooth, dry and free of any surface irregularities including dust, dirt, oil, grease, paint or other materials or roughness.

Concrete floors must be cured, completely dry, with a surface free of irregularities. When a straightedge 1 metre long is placed at rest at 2 points 1 metre apart, no part of the surface shall be more than 2mm below the length of the straightedge. Depressions and cracks must be filled using a suitable (taking into account the traffic loads) approved leveling compound in accordance with the manufacturer's instructions. All irregularities must be leveled. Existing timber, plywood and particleboard subfloors, must be checked for any loose boards/panels or excessive deflection or movement. If loose boards are found or movement is excessive, the subfloor should be re-affixed and damaged boards replaced, then if required, sanded to a level, smooth and dust free surface.

The installation of a 2mm closed cell foam underlay with minimum 200 micron moisture barrier or similar is recommended. Follow underlay manufacturer's instructions at all times. The floor can be installed over



most existing floor covering (e.g.ceramic tiles, linoleum, PVC etc.) provided the floor is flat, dry and in the case of ceramics in a residential installation, grout line tolerances are no more than 3mm wide and 3mm deep. Otherwise grout joints should be filed to the level of the tiles with a suitable leveller. Carpet, carpet underlay and/or existing floating floors is not a suitable subfloor.

Laminate Floors should never be installed over any subfloor heating system - the speed of sudden temperature changes having the potential to negatively affect the floor.

● **PERIMETER/EXPANSION GAPS**

A standard perimeter expansion gap of not less than 10mm must be maintained against all fixed vertical surfaces (e.g.walls, cabinets, sliding doors, island benches, plumbing fixtures etc.). For installation over large areas or in between multiple rooms that exceed 12m in length or 8m in width, the floor must be compartmentalised with gaps of not less than 18mm long-wise and 12mm between widths. A trim can be used to cover this gap, ensuring the floor is not pinned to the substrate or vertical surfaces. Silicone or caulking compound is not recommended.

Note: For installations that include the floor passing through multiple pinch-points, for example doorways and transitional areas from smaller passageways to larger rooms, consideration should be given to additional expansion allowance at these points.

● **TOOLS AND MATERIALS REQUIRED**

- ✓ Spacers
- ✓ Saw
- ✓ Pencil
- ✓ Ruler
- ✓ Tape Measure
- ✓ No.2 Rubber Mallet
- ✓ Tapping Block
- ✓ Adhesive Tape
- ✓ 2mm Closed Cell Moisture Barrier Underlay

INSTALLATION

As a floating floor, the floor should not be adhered, nailed or pinned in any way to the sub-floor or structure. Additional foam or cork underlay should never be used.

- Prepare the sub floor as set out in these instructions.
- Plan the direction of the area to be installed to maximise the visual appearance once installed. The direction of the tile/plank grain should be confirmed and the installation should be balanced from the centre of the area to minimise waste.
- After thoroughly cleaning the subfloor install the foam underlay. Run the foam underlay in the same direction as the flooring planks. The underlay should be butted side-by-side with no overlap. Tape seams together.
- Measure the room and estimate the number of rows required. If the last row is not at least 50mm wide, the first row should be cut so that the first and last rows are similar in width.
- To minimise shade variation, mix and install product from several different packs alternately. After laying a small quantity of product, view from a distance that allows you to clearly see the overall effect. If there is any doubt cease installation immediately and contact Value Tiles & Flooring.



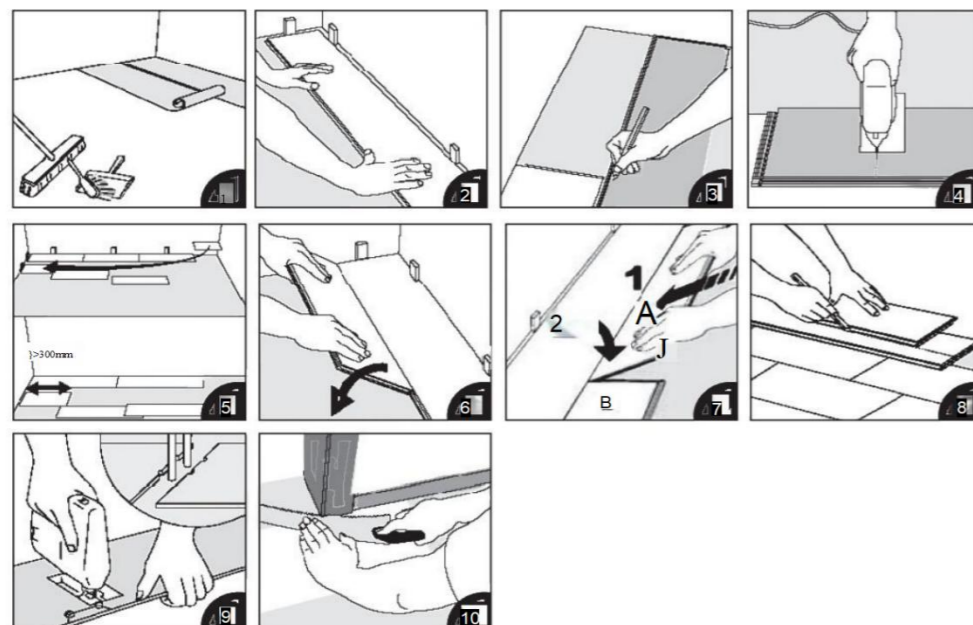
- From the right corner of the room put the first plank in place using spacer blocks against the walls to maintain the appropriate expansion gap so both the end and side seam grooves are facing outwards. Boards are to be installed from right to left. To assist in laying the first row straight, the use of masking tape across each short end locking system is recommended. Continue this for the first two rows and remove after completion of installation.
- Install the second plank in the first row by laying the plank against the short end of the first plank. Lock the planks together by pressing the two planks together to engage the lock. You will hear and feel the planks lock together as the locking tab engages in the end join.
- Start the next row with a cut board no smaller than 300mm. Click the side profile in the first row, while maintaining the 10mm expansion gap along the perimeter of the room or fixed vertical surfaces.
- Place the second board of row two into the side profile of the first row. Slide the board up tight against the short end of the first plank. Place one hand under the planks and a thumb on top and press until end joins sit flush together.
- Lay the next plank in the first row, followed by the next plank in the second row.
- The last plank in the first row should be cut to length while maintaining an expansion gap of not less than 10mm along the perimeter of the room or fixed vertical surfaces. If the leftover cut from the first row is at least 300mm long, use it to start the third row, otherwise cut another plank in two.
- Install the remaining planks in the second row by placing the plank tight against the short end of the first plank. Place one hand under the planks and a thumb on top and press until you hear the click as the locking tab engages.
- To lay the last row: position a loose board exactly on top of the last row aid. Place another board on top with the tongue touching the wall or skirting. Draw a line along the edge of this board to mark the first board. Cut along this line to obtain the required piece. Install the cut board. The last row (possibly the first row) plank width should be no less than 50mm on the long seam. Remember to allow for the appropriate expansion gap to the wall.
- Remove the spacers.
- Holes for pipes: measure the diameter of the pipe and drill a hole that is 20mm larger.
- Architraves(doorways) can be installed with a 10mm expansion gap. Or the architrave can be undercut a little higher than the thickness of the board. Adequate expansion must be left.
- Install wall mouldings and door transition mouldings last. Be sure that all mouldings are fastened directly to the wall or subfloor; do not place any fasteners through the floating flooring. Care must be taken when fitting wall mouldings that they do not push down on the floor.
- This will affect the floors ability to expand and contract and may lead to product failure.

● **POST INSTALLATION**

If construction works are still underway, the floor should be protected from site debris, dirt, soil, traffic etc. By using of a protective surface (e.g. sheet plastic, hard boards etc). Please be careful to ensure no condensation occurs and any adhesive tape or protective material does not affect the aesthetics of the finished installation.



● **INSTALLATION ILLUSTRATIONS**



● **LAMINATE-WARRANTY GUIDE**

● **GENERAL**

This general warranty or parts thereof are subject to exclusions and limitations.

This warranty applies only to the original purchaser, to product in its original installation, is prorated and is not transferable. The original purchaser must keep the original receipt as proof of purchase. If a problem appears which is covered by this warranty, the original purchaser must contact the retailer within 30 days of detecting the issue to describe the problem.

Value Tiles & Flooring reserves the right at any time to modify or discontinue any of its products and will not be liable as a result of any such change. If the original product is no longer available, Value Tiles & Flooring may substitute with a reasonably comparable product.

Before installing, the product should be laid out, blending the planks from several boxes to determine optimum appearance. Value Tiles & Flooring is not responsible for labor costs to replace visibly defective product after installation.

No person other than a Value Tiles & Flooring representative is authorized to accept or refuse a warranty claim. No person is authorized to waive or modify the terms of this warranty. Value Tiles & Flooring reserves the right to designate a representative to inspect the flooring and remove samples for analysis prior to accepting or refusing any claim. No repairs, except for urgent ones, may be made until after such inspection or until Value Tiles & Flooring indicates that such inspection is not required.



● **INSTALLATION**

This limited warranty covers products and reasonable labor costs (as determined by Value Tiles & Flooring, at its sole discretion) provided a professional installer was used and paid when the product was originally installed, and provided further that such product was installed in accordance with Value Tiles & Flooring's installation instructions. These instructions are located inside each box.

● **WARRANTY COVERAGE**

Residential warranties only apply to products intended for installation in non-commercial, owner-occupied, residential premises. Residential rental units fall under the commercial warranty only. Commercial warranties apply to areas that are considered as having light and moderate traffic including private offices, boutiques, bistros, hotel guest rooms, meeting rooms, multi-housing common areas and hallways.

➤ **MANUFACTURING DEFECTS**

Value Tiles & Flooring warrants to the original purchaser that, if properly installed, the product will remain free of manufacturing defects for the indicated period of time specified on the authorized retailer's sample, starting from the date of the original purchase. The product is manufactured according to the floor covering industry's standards and tolerances in quality variation. Value Tiles & Flooring will replace or repair defective product including reasonable labor costs during the first 10 years from the date of the original purchase. This warranty is subject to exclusions and limitations.

➤ **WEAR, STAIN AND FADE**

Value Tiles & Flooring warrants to the original purchaser that, if properly installed and maintained, the product will not wear, stain or fade from normal use for the indicated period of time specified on the authorized retailer's sample, starting from the date of the original purchase. This warranty is subject to exclusions and limitations.

Definitions:

"Wear" must be through the wear layer to the degree that the printed pattern is altered.

"Fade" must be to the degree that the flooring is permanently discolored.

"Stain" is defined as a permanent change in color of the surface of the product caused by food, beverages.

● **LIMITATIONS, TERMS AND CONDITIONS**

For any questions regarding the warranty information, the consumer may contact the retailer. The following limitations, terms and conditions apply to this warranty:

- **Installation.** Failure to follow the provided installation instructions may void the warranty. Damage resulting from improper storage, handling or installation is not covered by this warranty as well as damage resulting from poor or defective workmanship. The products must never be installed outdoors. Cabinets or kitchen islands must not be installed on floating floors.
- **Visible defects.** Before and during installation, the product must be inspected under sufficient lighting to detect any visible defects. Under no circumstance should defective products be installed. Value Tiles & Flooring will not be held liable for labor costs related to the removal of these defective products.
- **Abnormal use.** This warranty does not cover products that have been put through abnormal use or conditions or abused in any way. This includes, but is not limited to, damage caused by standing liquid or water leaks, damage from falling objects, damage caused by dragging objects or furniture, neglect, high heel shoes, pebbles or abrasive materials, and improper maintenance. To prevent such damage, any spill should be wiped up immediately, pet's nails should be kept trimmed, floor protectors should be installed under the legs of the furniture, and suitable mats should be used at all entryways.



- **Accidents and natural disasters.** This warranty does not cover any accidental damage to the product or any natural disasters that may damage the flooring. This includes, but is not limited to, damage from fire and smoke, floods, earthquakes, storms, broken pipes or any other plumbing related failures.
- **Climate.** This warranty does not cover damage to the product resulting from exposure to extreme heat or cold nor from extremely humid or dry conditions. Exposure to such conditions will void this warranty. Temperature levels must be maintained between 65°F and 85°F (18.3°C and 29.4°C) at all times.
- **Subfloor and underlayment.** Problems resulting from improper subfloors or underlayment may void this warranty. Damages or noise(squeaking) resulting from excessive subfloor deflection, improper joist assembly, irregular subfloor or subfloors with voids are not covered by this warranty. This warranty does not cover damage from water or moisture trapped underneath the floor. Humidity tests on wooden and concrete subfloors must be undertaken before installing the product.
- **Care and maintenance.** Failure to properly maintain and care for the product may result in voiding this warranty. Prolonged exposure to liquids may damage the product, therefore, spilled liquids must be wiped up immediately. Cleaning with excess water or inappropriate cleaners will void the warranty. The product must never be waxed, polished or steam cleaned. Surface scratches are not covered by this warranty.